



Child Protection in Sport Webinar

Joe Cartwright - Training and
Development Consultant

Jude Toasland - Senior Consultant





Safeguarding Policies – What you need to know

Joe Cartwright - Training and
Development Consultant

Jude Toasland – Senior Consultant



Learning environment

- child-focused approach
- confidentiality
- respect
- personal responsibility
- engagement
- personal wellbeing



Equality, Diversity & Inclusion



NSPCC Training is fully committed to:

- respecting and treating everyone **fairly**
- eliminating **discrimination**
- actively promoting **equality** of opportunity
- delivering **fairness** to all through all our activities
- promoting **inclusive** processes, practices and culture
- accountable for our own **commitment** to EDI.

Taking care of yourself

NSPCC



If you are personally affected or concerned by any of the issues raised by today's session, you may find these contact details helpful:

NSPCC helpline

(free helpline for adults needing personal advice and support or worried about a child)

0808 800 5000 | help@nspcc.org.uk | nspcc.org.uk

NSPCC whistleblowing advice line

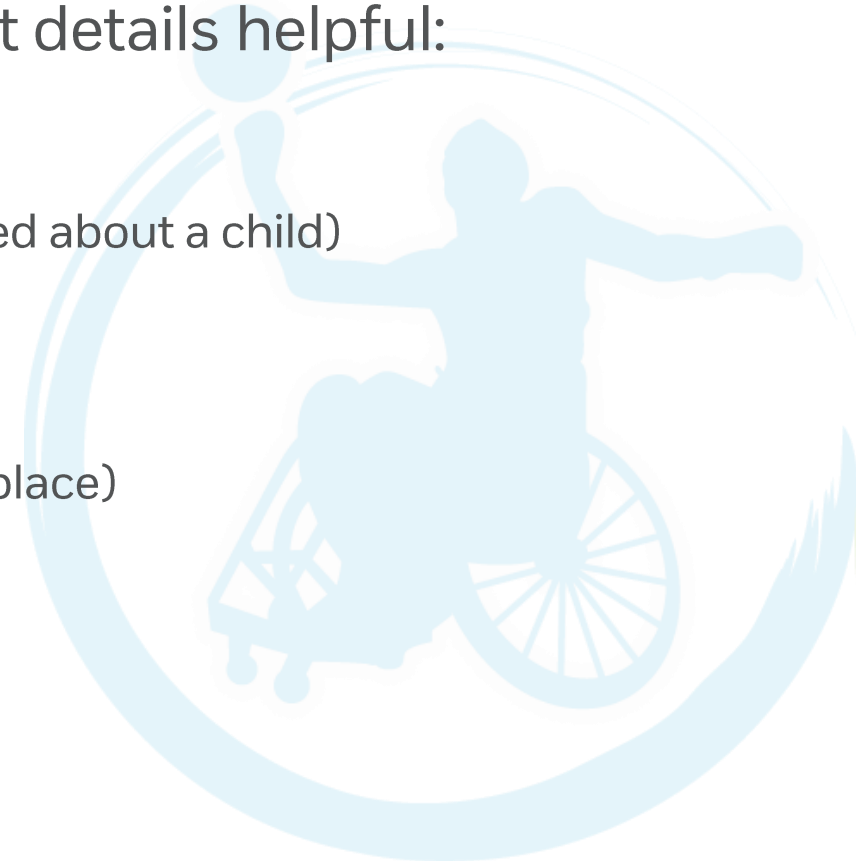
(support for professionals who are worried about children in the workplace)

0800 028 0285

Childline

(24/7 service for children and young people)

0800 1111 | childline.org.uk | App store: For Me



Learning outcomes

NSPCC



By the end of the session, you'll be able to understand:

- What you need to have robust safeguarding policies and procedures
- The importance of policies and procedures



Poll

Who do policies and procedures protect?

- Employer/Funder?
- Participants?
- Staff/Coaches/Leader?
- Everybody?



Poll

Policies and Procedures should be

- Completely confidential
- Available for all
- Available for staff/employees
- Available for managers



What is a policy?

- A Policy is a brief statement of a intent.
- You can use the CPSU Sample policy statement from our website [Sample safeguarding policy statement | CPSU \(thecpsu.org.uk\)](https://www.thecpsu.org.uk/sample-safeguarding-policy-statement)



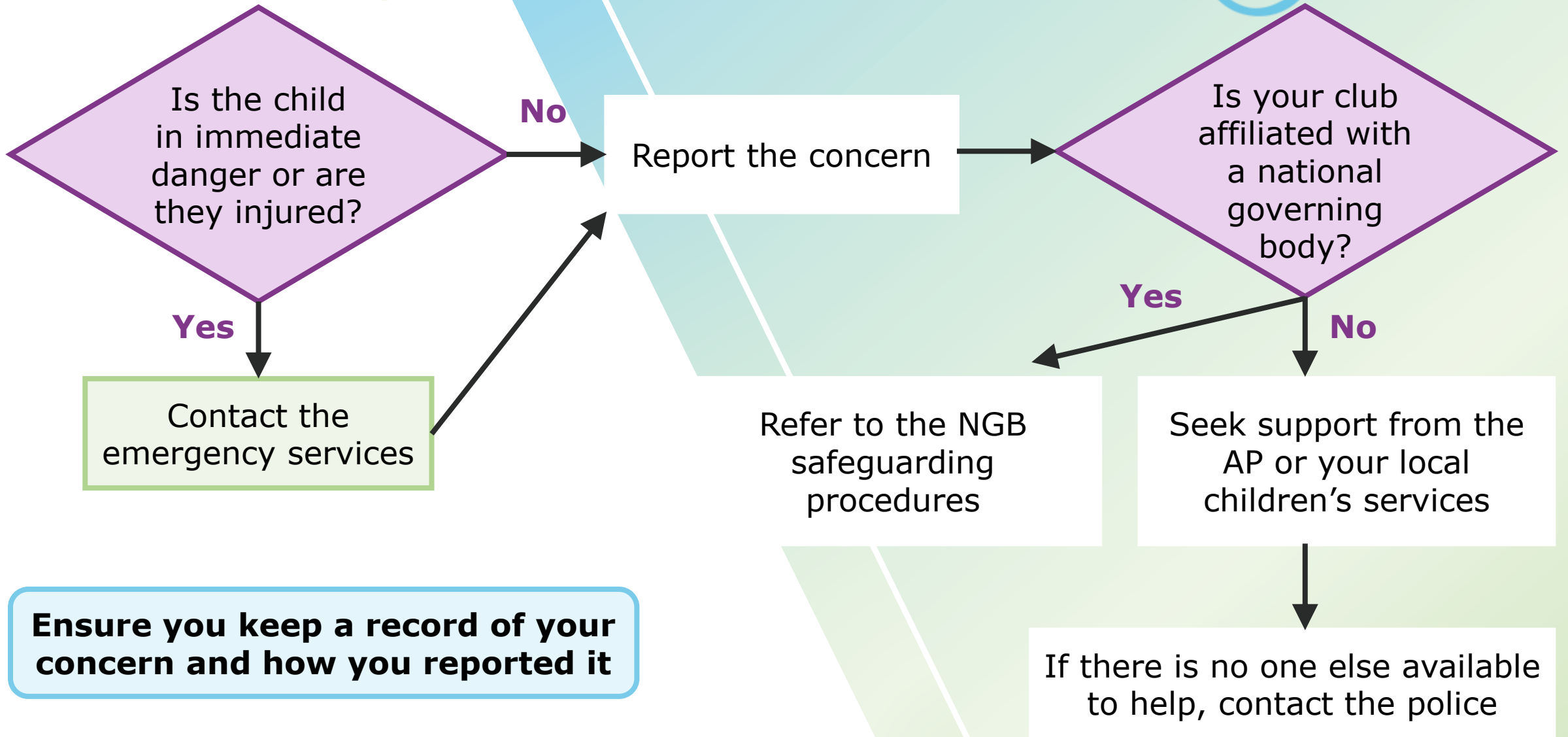
What is a procedure?

- The procedures provide the detail of what should happen within the organisation.
- Some organisations also have separate guidance documents to support staff, volunteers, children and families within their activities.
- [Putting safeguards in place for children in sport | CPSU](#)
thecpsu.org.uk



Reporting procedures

time to listen



Ensure you keep a record of your concern and how you reported it

What is a guidance?

- Guidelines provide an overview or recommendation of how to perform a task.
- [Writing safeguarding plans guidance | CPSU \(thecpsu.org.uk\)](#)





Why is safeguarding important?



Safeguarding policy and procedures benefit:

- Children and young people
- Parents & carers
- Volunteers, staff & coaches
- Clubs/facilities
- Organisation/Governing Body
- Insurers
- Funding agencies



Safeguarding arrangements

Organisations should have in place arrangements reflecting the importance of safeguarding and promoting the welfare of children.



The impact of culture

NSPCC



The visible organisational culture –
vision, strategy, shared values, structures, policy and procedure



The invisible organisational culture –
or the way things really operate



Beliefs, perceptions, tradition, norms, unwritten rules,
values, stories, personalities

Signposting

- Sport safeguarding training | CPSU
(thecpsu.org.uk)
- Putting safeguards in place for children in sport | CPSU
(thecpsu.org.uk)





Questions

